

TESTBED HIRE



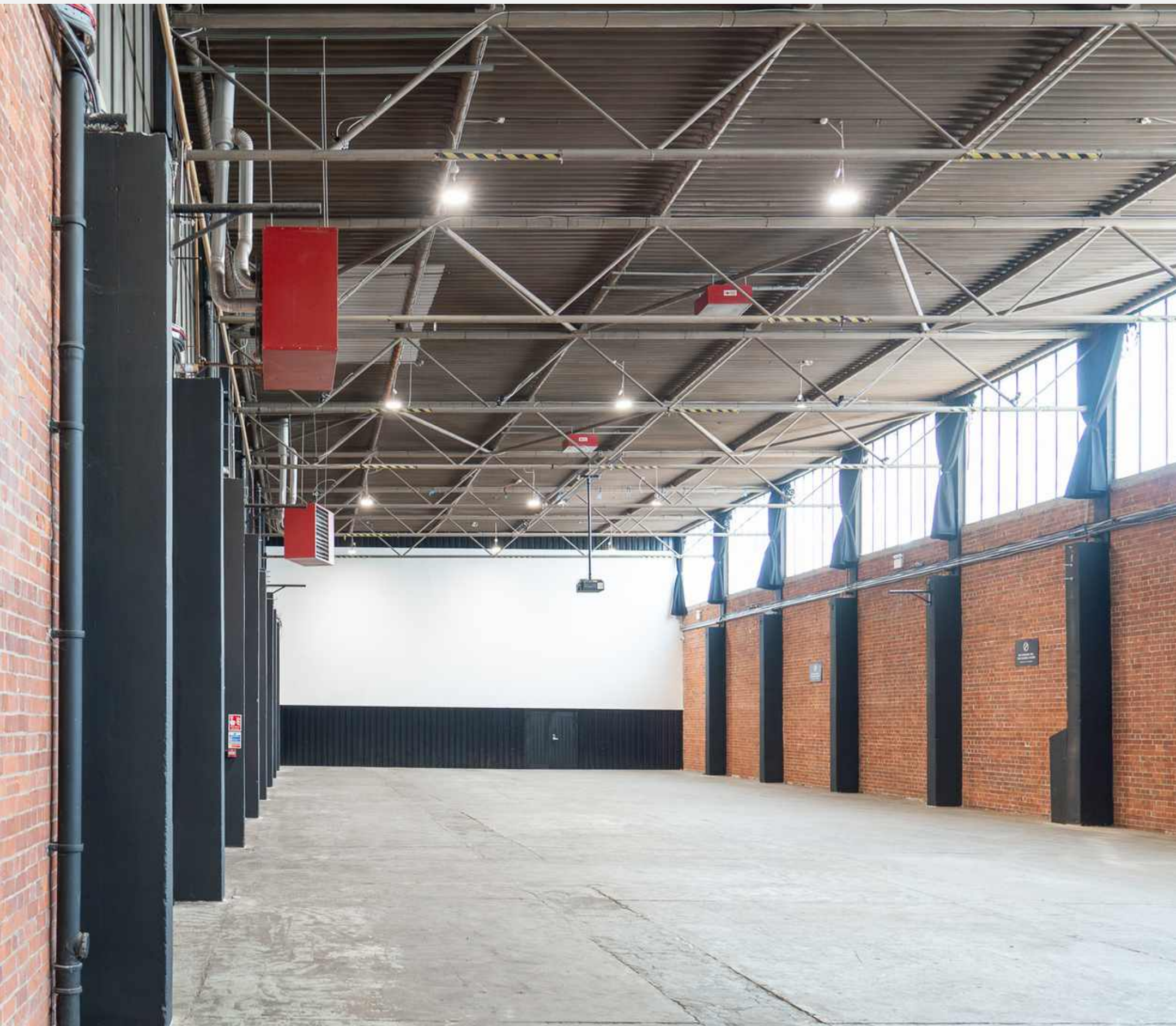
CULTURE - CONTENT CREATION - EVENTS

1.3 BROCHURE





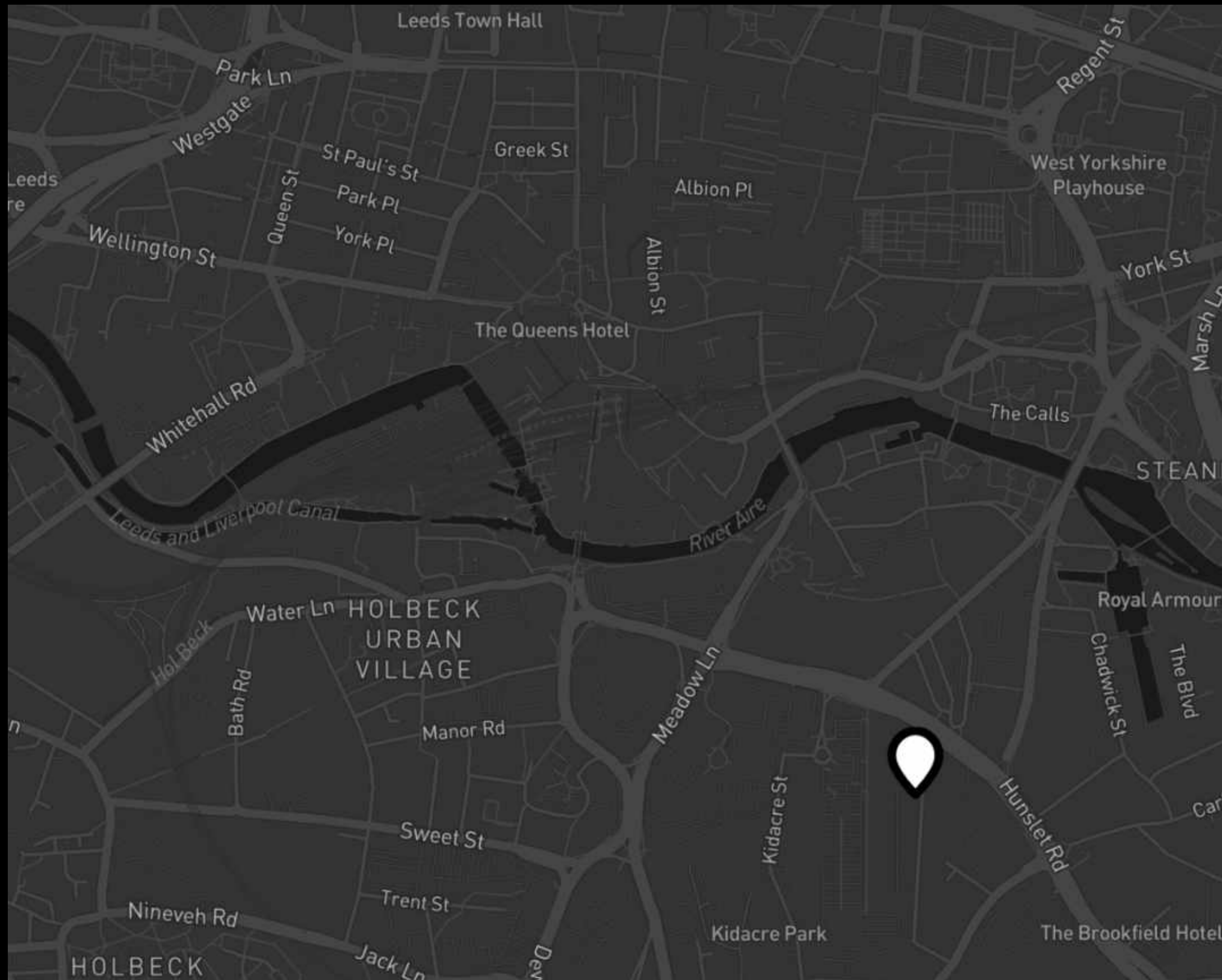




We provide a versatile, blank canvas space designed to inspire creativity and foster cultural expression. Our passion is for curating exceptional experiences that resonate with people. Whether it's art, content creation, or unique events, serves as a platform where ideas come to life and communities are brought together.

is a proud initiative of The Wunderkind Group, a family-run, independent business dedicated to cultivating innovation and excellence across various ventures. Beyond , The Wunderkind Group is involved in a range of projects, each driven by our commitment to quality, creativity, and a deep sense of community.

TESTBED



LOCATION

BUTTERLEY STREET
LEEDS
LS10 1ES

ADULT.NEON.ROBOTS
(WHAT THREE WORDS)

[FIND ON GOOGLE MAPS](#)

WWW.TESTBEDLEEDS.COM/VENUE-INFO

USES

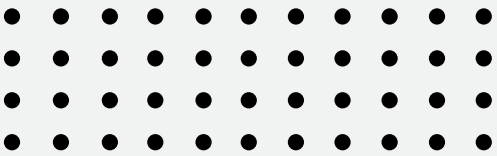


TESTBED 1.3 IS NOW OPEN FOR
APPLICATION FOR ALL TYPES OF USES

FILMING / PHOTO SHOOTS / REHEARSALS
RETAIL EVENTS / CONCEPT TESTING
LARGE SCALE BUILD / ART INSTALLATIONS
MARKETS / PRODUCT LAUNCHES AWARD
CEREMONIES IMMERSIVE EXPERIENCES
COMEDY DANCE THEATRE / EXHIBITIONS
CONFERENCES / AGM's / BRAND
ACTIVATIONS / CORPORATE EVENTS
TALKS / ESPORTS EVENTS
WEDDINGS / FASHION SHOWS
COMMUNITY HAPPENINGS / FILM
SCREENINGS / CLUB NIGHTS / GIGS
FOOD & DRINK FESTIVALS / DINING
EXPERIENCES

+ MORE

WHATS NEW IN 1.3



MAIN SPACE

55ft Projection Screen
Full Venue Black Out

UNDER THE MEZZ

Sound
Lighting
Visuals
DJ booth
Partition drapes
Toilets

OPERATIONS

Annex A - Dressing Room
Annex B - Control Room

KIT

On-Site DJ Kit hire
On-Site Table and Chair hire
Portable DJ Booth

GENERAL

Smoking Area including awnings heaters,
artwork, benches, external signage

WHY 1.3

is evolving through iterations (1.1 to 1.9). Much like software it works from the start. But over time, upgrades and adjustments enhance the experience and expand functionality.

Our goal is to create a space that Leeds truly needs—a space shaped by the people that use it. Currently at phase 1.3, we're continually building, testing, learning, and improving from here.

BLANK CANVAS SPACE

CULTURE - CONTENT CREATION - EVENTS

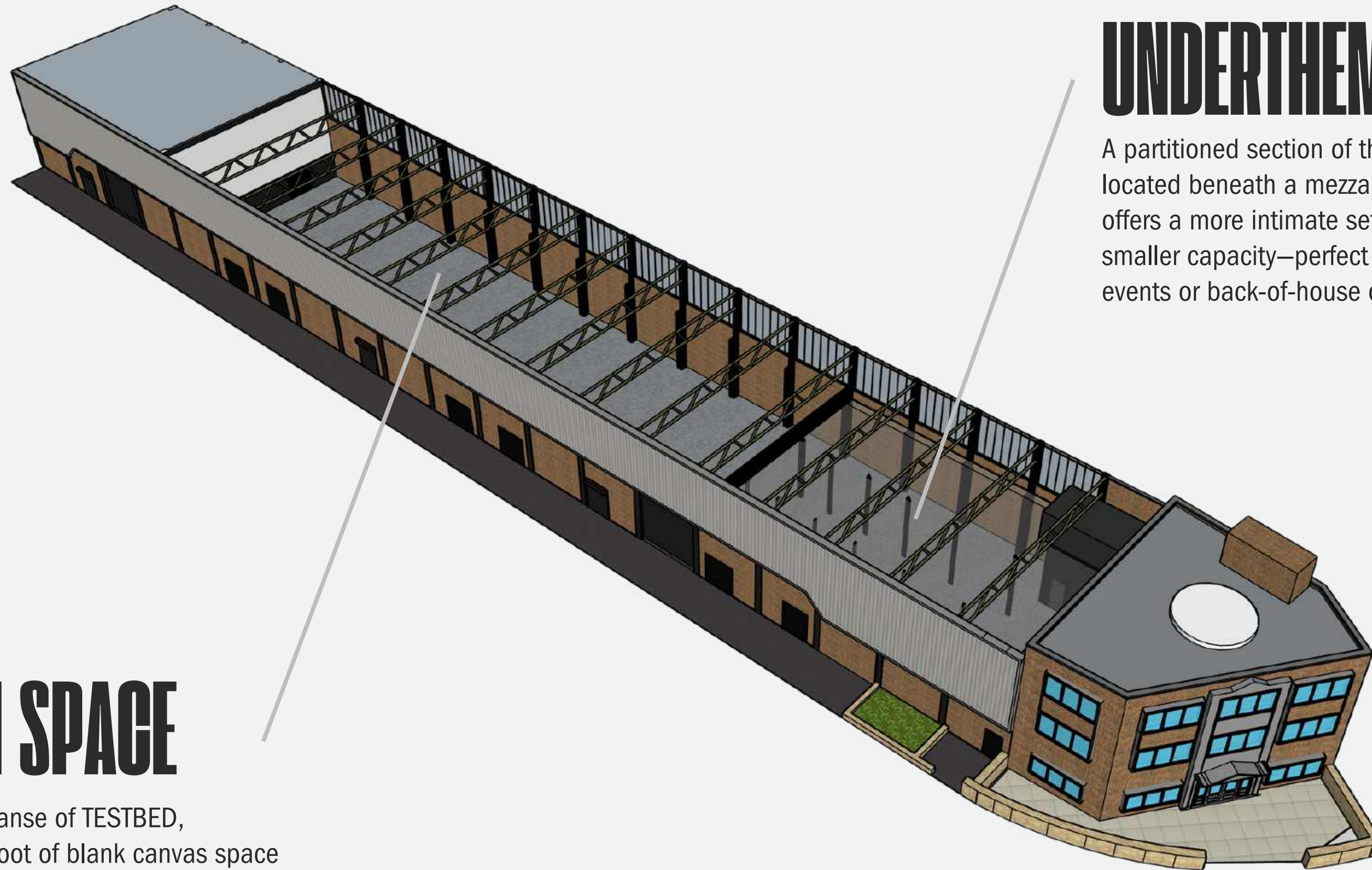
TESTBED

UNDERTHEMEZZ

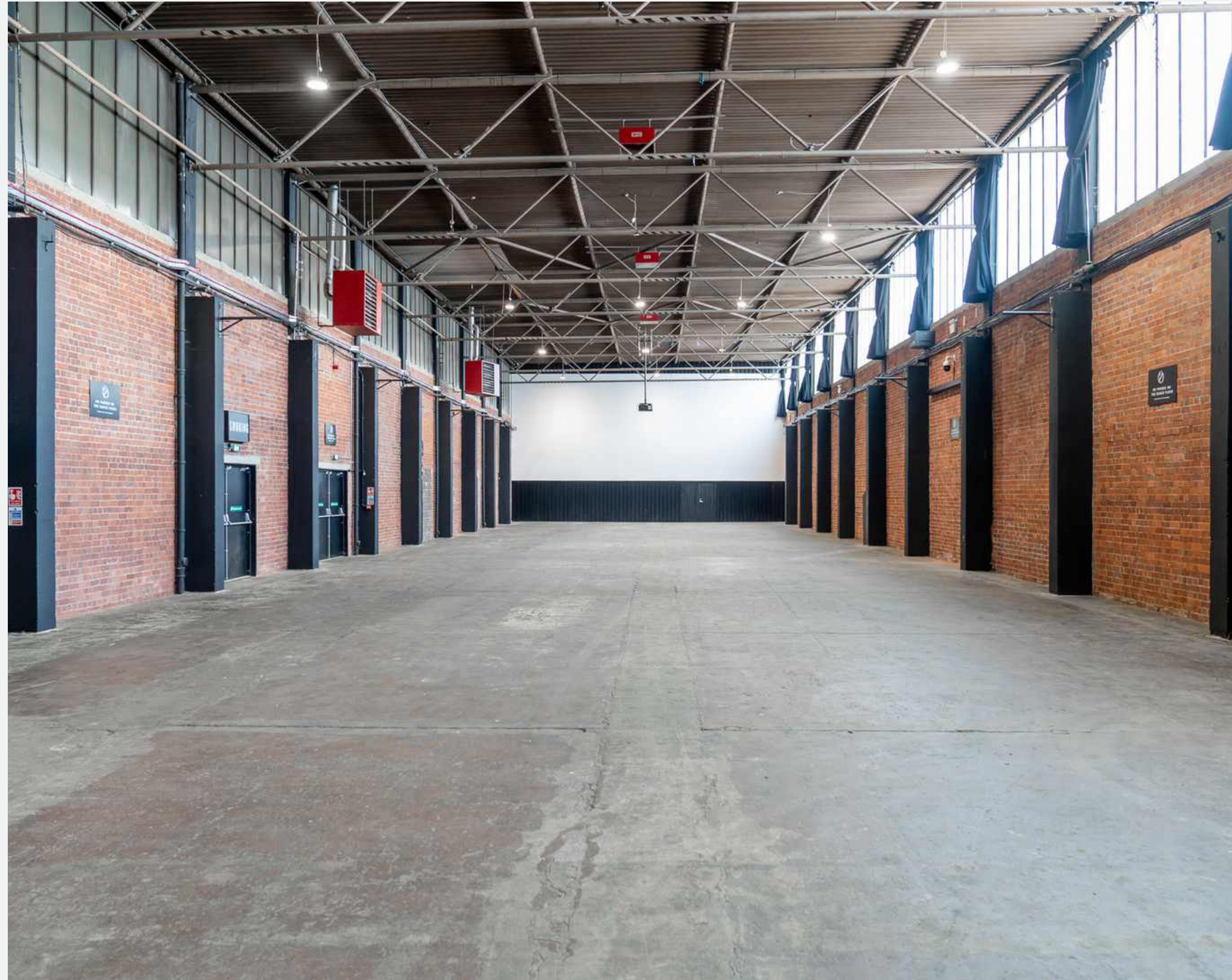
A partitioned section of the Main Space, located beneath a mezzanine floor, offers a more intimate setting with smaller capacity—perfect for private events or back-of-house operations.

MAIN SPACE

The full expanse of TESTBED,
10,000sq foot of blank canvas space



MAIN SPACE



The full expanse of TESTBED, 10,000sq
foot of blank canvas space

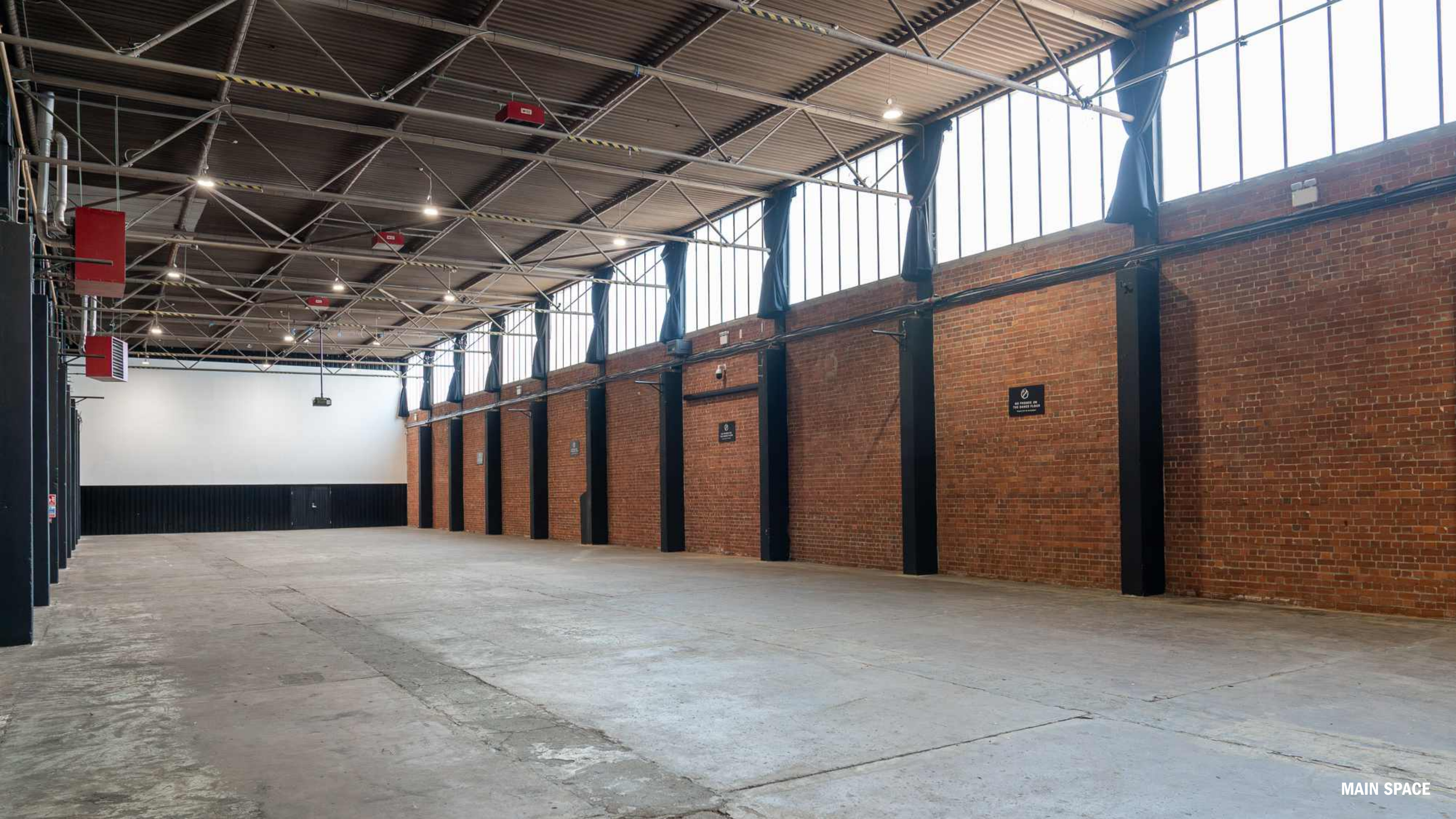


TESTBED

MAIN SPACE



MAIN SPACE



MAIN SPACE

MARKETING OBJECTIVES



BOOST BRAND AWARENESS.

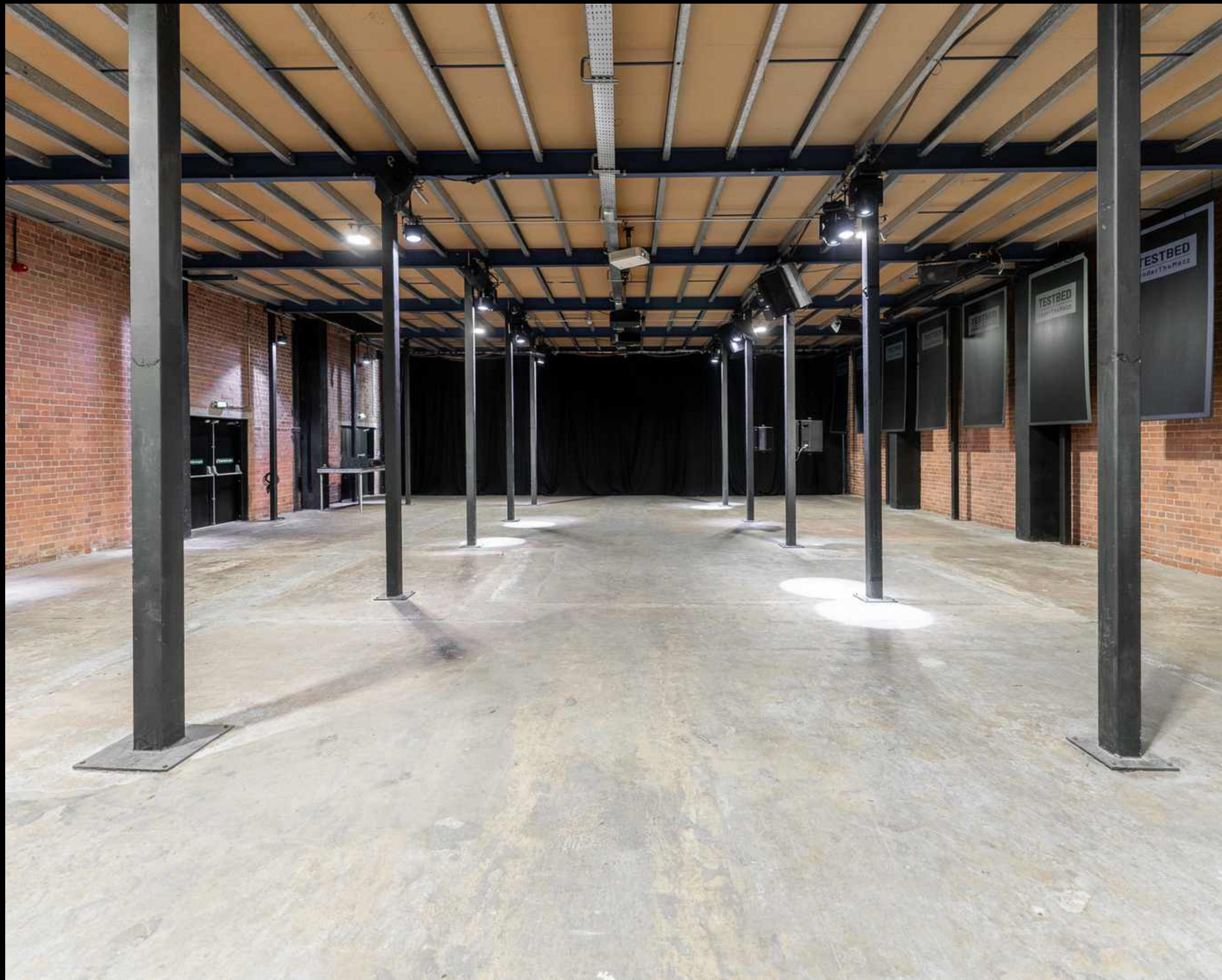
Develop social media marketing strategies specifically for the target demographic.

ENHANCE CUSTOMER LOYALTY.

Foster engagement and create deeper audience connection through exclusive content.

INCREASE PRODUCT SALES.

Explore promotional offers and make



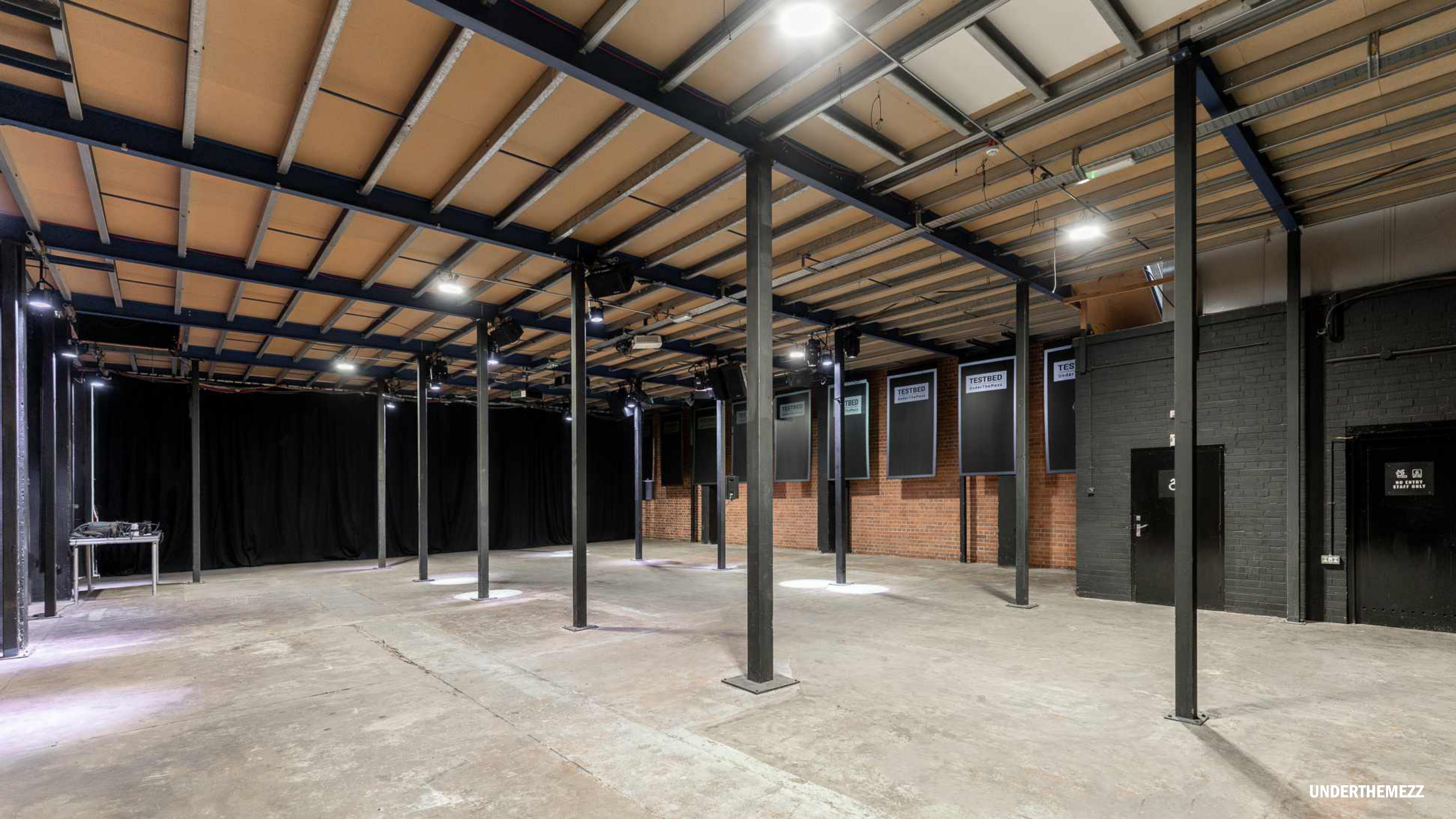
UNDERTHEMEZZ

A partitioned section of the Main Space, located beneath a mezzanine floor, offers a more intimate setting with smaller capacity—perfect for private events or back-of-house operations.

Making Presentations That Stick

A guide by Chip Heath & Dan Heath









ANNEX A



Annex A is a versatile space adjacent to our Main Space, designed primarily as a green room, staff room, or dressing room, but adaptable to meet any event requirements.

ANNEX B



Annex B is a versatile space adjacent to our Main Space, primarily designed as an operations or control hub, but flexible enough to accommodate any event needs.

PRICING

CULTURE - CONTENT CREATION - EVENTS

TESTBED

MAIN SPACE PRICING

SERIES 2 S PRD
FULL EXCLUSIVE USE OF THE SPACE INCLUDING UNDERTHEMEZZ

We operate a flexible application process for venue hire, reviewing proposals on a case-by-case basis. We're seeking diverse, exciting, and unique bookings.

Day rates start at £1600 + VAT.

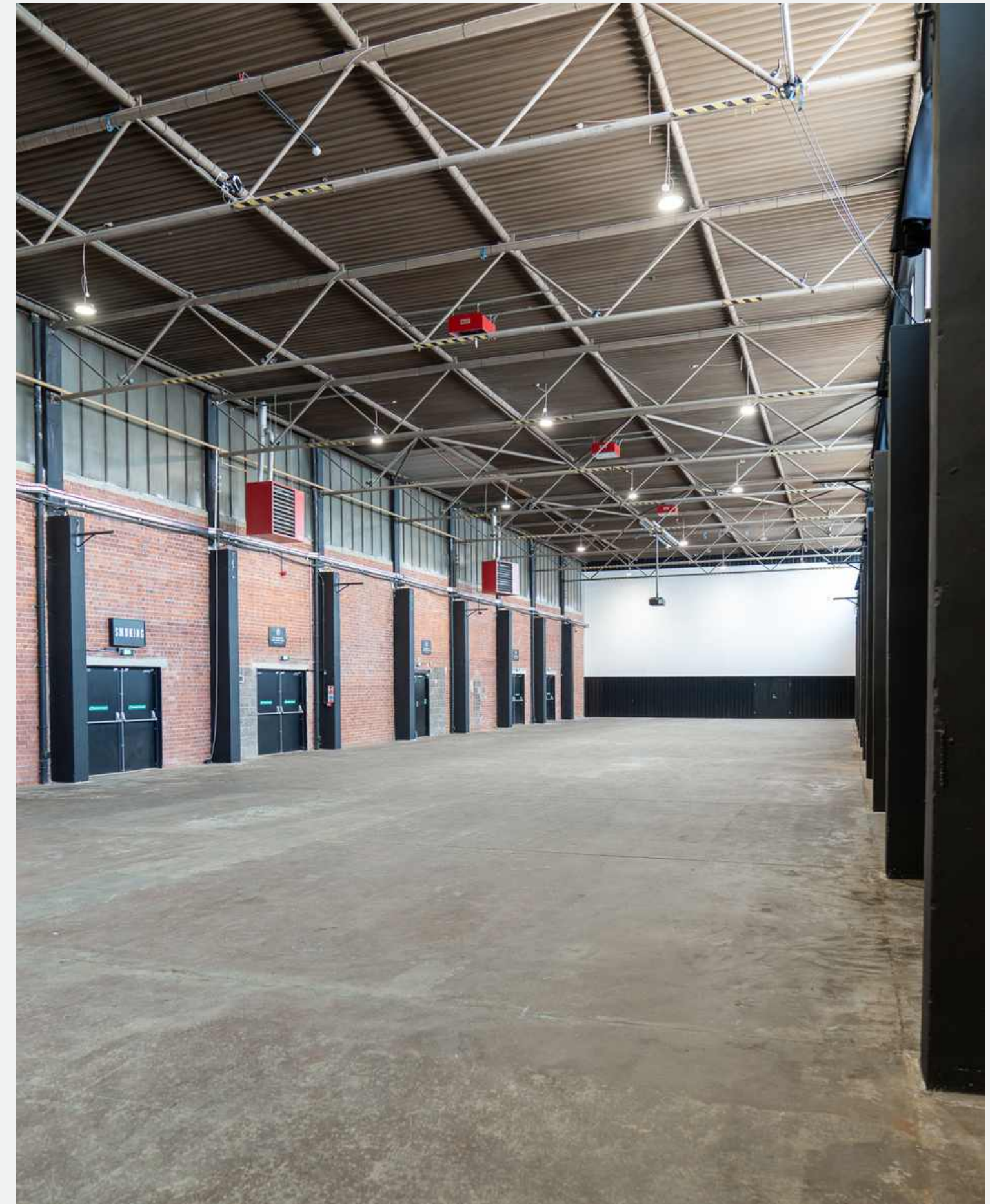
We offer both blank canvas space hire and tailored packages with infrastructure included.

For events requiring bar services, we can provide a full bar operation or offer Dry Hire rates.

We also offer alternative arrangements, discounts, and solidarity rates for underrepresented communities and charities.

Commissionable rates and block booking discounts are available.

Contact us today for a personalised quote.



UNDERTHEMEZZ PRICING

FULL EXCLUSIVE USE OF THE SPACE INCLUDING UNDERTHEMEZZ

We operate a reduced rate for hiring the UnderTheMezz area.

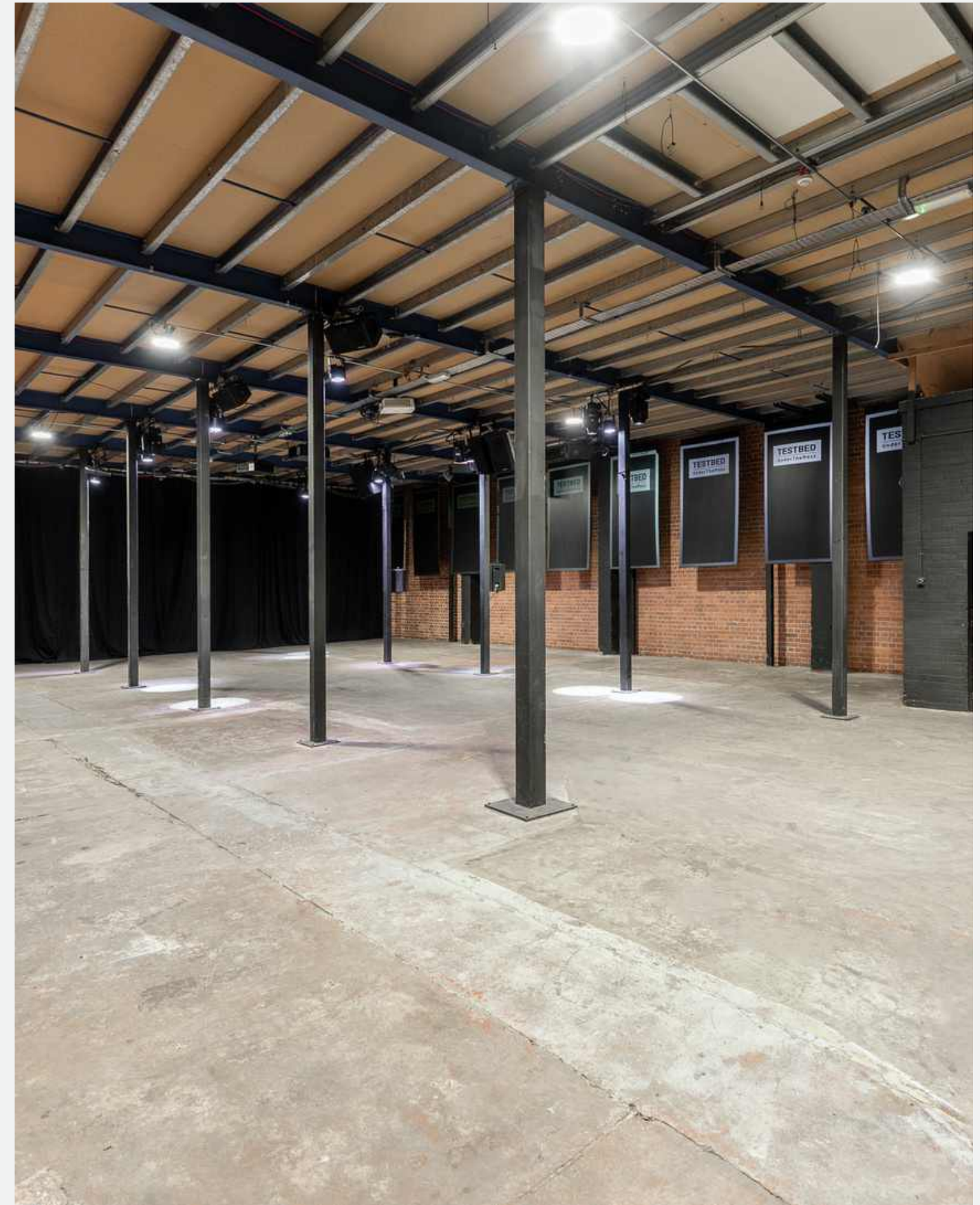
Day rates start at £600 + VAT.

Hiring UnderTheMezz includes access to built-in sound, lighting, and visuals.

We can provide a full bar operation for events requiring bar services or offer Dry Hire rates.

We also offer alternative arrangements, discounts, and solidarity rates for underrepresented communities and charities.

Contact us today for a personalised quote



UNDERTHEMEZZ PRICING

All In Packaged for Promoters of Club nights and Performing Arts Events

UnderTheMezz is now available with 2 custom all-in packages

CLUB NIGHT - PERFORMING ARTS

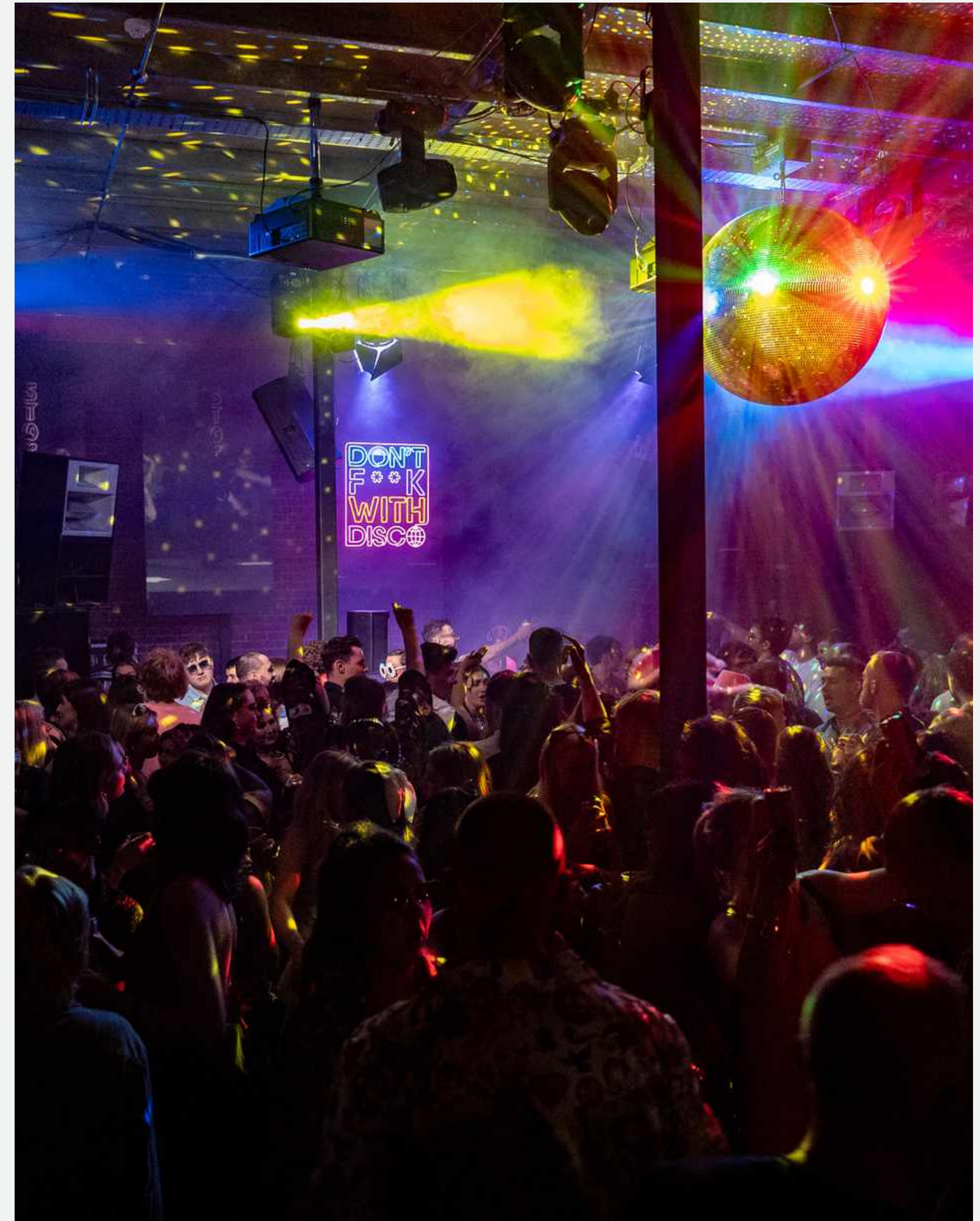
These all in packages provide everything you need to put on a night: bars, cleaning, security, music licencing, technicians, setup crew, box office staff, sound, light, visuals, furniture - all you have to worry about is curating the artists and selling the tickets

UnderTheMezz events packages are aimed at a minimum attendance levels of:

Performing arts events - 300

Clubnight events - 500 (max 800)

Contact us today for a personalised quote



OPTIONAL EXTRAS

By combining our in-house resources with a trusted network of suppliers, we offer a variety of additional options to support events of any scale, including:

Staffing: Security, Welcome Staff, Box Office, Technicians, Catering Assistants, and more

Production Services: Staging, Lighting, Sound, Special Effects, Screens, Projection

Support Spaces: Dressing Rooms, Control Room, Cloakroom Facilities

DJ Equipment: Fixed and Portable DJ Booths, Industry Standard Equipment

Space Division: Drapes, Barriers, Crowd Control Solutions

Furniture Hire: Tables, Chairs, Benches, Bars

Catering Options: Seated Meals, Buffets, Street Food

Additional Toilets: Portaloos, Luxury Trailers

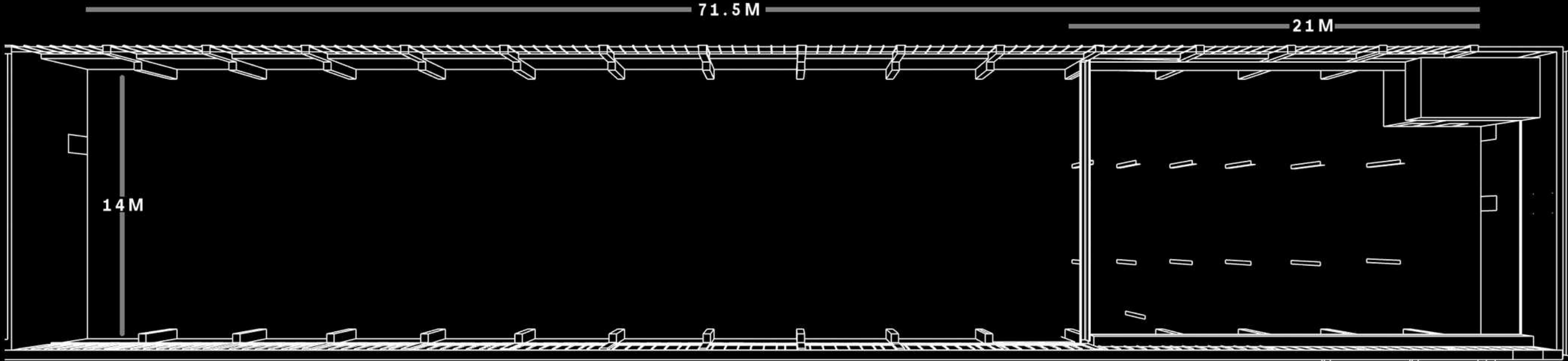


DETAILS

CULTURE - CONTENT CREATION - EVENTS

TESTBED

BASIC DIMENSIONS



957 SQ METERS (10,300 SQ FOOT)

14M WIDE X 71.5M LONG

6.5 METERS TO UNDERSIDE OF BEAMS

8.1M TO CEILING

FULL PLAN

SERIES - S PRD

CAPACITIES & LAYOUTS

THEATRE - 800

DINING - 450

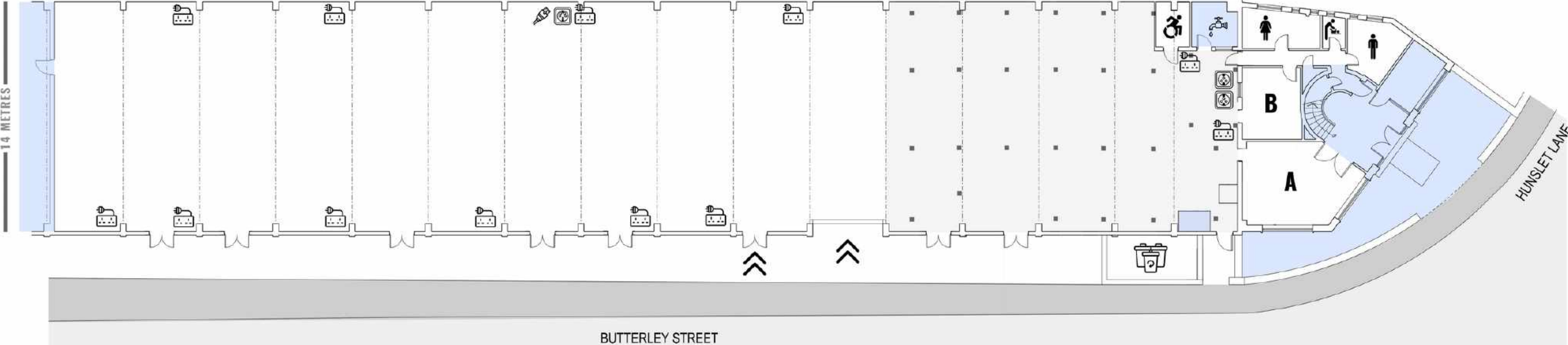
STANDING - 2500

CABARET - 350

SCALE 1:100 @A0 | 1:200 @ A2

71.5 METRES

14 METRES



BARS AND LICENCING

TESTBED holds a full licence, with a flexible, tiered system that allows for:

- **Everyday Events:** Up to 800 people, running until 1am (no restrictions)
- **Medium Events:** Up to 1,500 people and/or until 4am (limited to 3 events per month)
- **Large Events:** Up to 2,500 people, running until 11pm (limited to 2 events per month)

We offer 12 metres of custom-made portable bars and bar backs, which can be configured in various setups to suit your event.

A full bar service is available, as well as dry hire options.

Contact us today for a personalised quote



IN HOUSE SPECS & INFRASTRUCTURE

PHASE 1.3

Main Space Projection

55 foot (14m x 5m) Cinema
Sized Projection Screen

X1 5m Retractable
Projection Screens

X1 Full HD Projector

In-House DJ Equipment

X1 Pioneer DJM V10

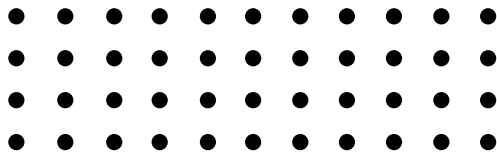
X2 Pioneer DJM A9

X4 Pioneer CDJ3000's

X2 Technics 1210 Mk2

X2 Technics 1210 Mk7

X1 MasterSounds Radius4



UnderTheMezz Sound

X5 Powersoft K Series Amps

X4 Pioneer XY218S Subs

X4 Pioneer XY122 12' + 2' mid highs

X9 Pioneer XY81 8' + 1' mid highs

X3 Pioneer XPRS12 Active Monitors

Midas M32 32 Channel Sound Desk

UnderTheMezz Lighting

Avolites Titan Mobile Desk

X12 Prolight Flatcob 80 LED PARs

X6 Prolight Crystal 100w
LED Moving Head

x2 Prolights EclFresnel

Look solutions unique 2.1 haze machine

UnderTheMezz Projection

X3 Full HD Laser Projectors

Powered By Resolume Arena 7

X9 2m x 1m Vetical Screens

X1 5m (16:9) Retractable
Projection Screen

Power

x14 13A power sockets

x2 32A single phase sockets

x1 63A three phase sockets

Broadband

1Gb Lesed line -
Guest Wifi Network throughout

Ethernet hookup + VLAN
setup options available.

Toilets

x1 Accessible toilet

X1 Ladies Toilet
(3 cubicles +
baby change)

X1 Gents Toilet
(2 cubicles x3 Urinals)

X1 Changing toilet
(single toilet + baby
change facilities)

**Suitable for up to
400cap, non music event**

Other Items

Portable cooling fans

X2 2m x 1m Riser

X41 PED Barriers

X23 Heras Fence Panels

Other Items

X8 Sturdy Outdoor Benches

X17 Beerfest style trestle
table and bench sets

X100 foldable
black padded chairs

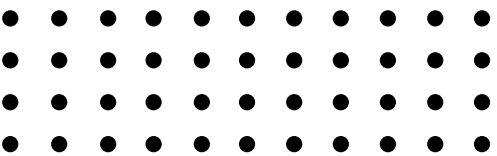
Drive-in roller shutter
loading access

On-site production
warehouse

Loading/drop off parking

14m x 8m Wool Serge
Drape (full venue divide)

Full venue blackout drapes



PRODUCTION HIRE

**PRODUCTION MANAGEMENT - HIRE - TECHNICAL SERVICES - LIGHTING - STAGING
VIDEO - POWER - AUDIO - SFX**

TESTBED offers full on-site production services from Axiom Events.

Axiom Events on site warehouse within **TESTBED** encompasses a whole host of technical production services. A highly experienced and proficient team of engineers and crew, alongside a vast rental stock. Axiom Events can help with all your event needs with preferential rates to **TESTBED** hires.

Due to the specific nature and architecture of the building, all rigging, including motors, trussing, and power distribution, must be managed in-house by Axiom Events.

3rd Party production suppliers are possible via a buyout.

www.axiomevents.co.uk



PRODUCTION BUILD

CNC MACHINING - LASER CUTTING - VINYL CUTTING - 3D PRINTING AND MORE

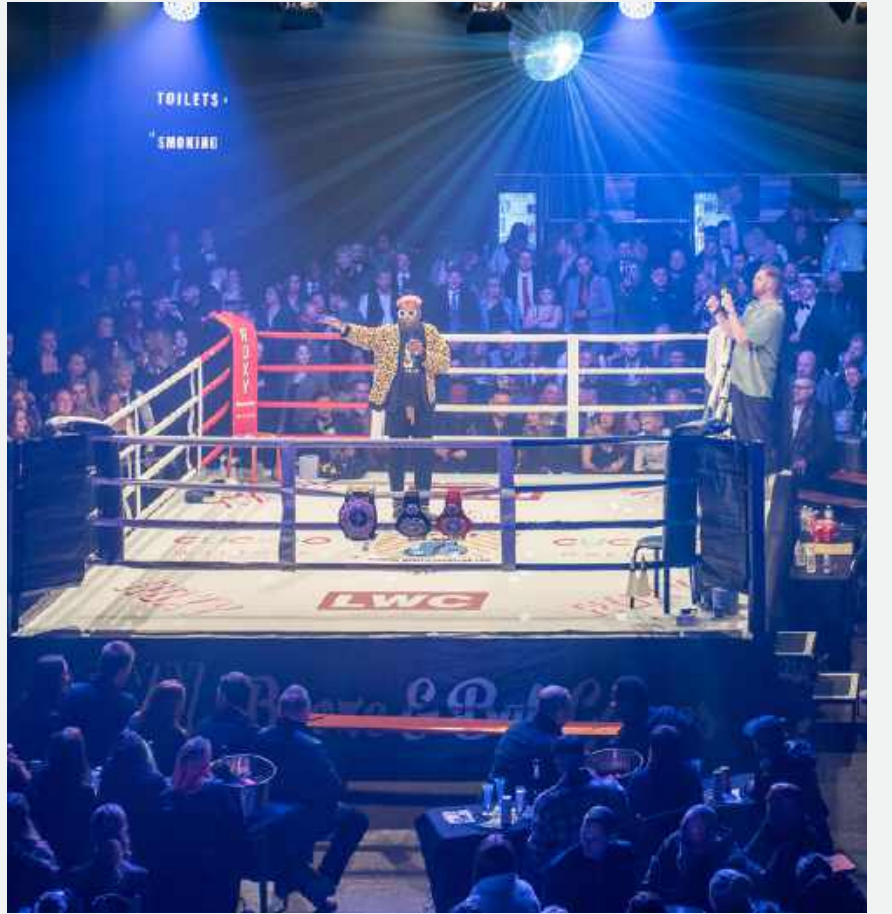
Located adjacent to **TESTBED** is Duke Makes an 'Agency for Making'.

The advanced manufacture facility offers a full turn key design and create service.

With an extensive suite of digital and traditional tools they can design and manufacture anything from individual props to full sets at speed. They specialise in designing and fabricating solutions for large-scale art pieces, brand activations, events, conferences, film productions... and much more.

www.duke-makes.com





ZERO TOLERANCE POLICY

operates a Zero Tolerance Policy. We do not tolerate any harmful or disrespectful behaviours such as Racism, Misogyny, Homophobia, Transphobia, Ableism, Ageism, or Fatphobia.

ACCESSIBILITY

TESTBED has step free access and is all on one flat level. Phase 1.3 has a single permanent accessible toilet.

[Head to the accessibility_page on our website for in depth information.](#)

THANK YOU

[CLICK HERE FOR ENQUIRY FORM](#)

TESTBED